



Repc Ltd

# Refurbishment Process

## Overview



# GOODS IN

The goods in stage of the refurbishment process consists of 2 main tasks - Pre-Audit & Audit.

Once each device is pre-audited reporting documentation is sent to the donor.

Donors receive the following documents when their equipment has been fully processed:

- Audit Summary Report
- Audit Report
- Data Wiping Log
- Data Destruction Certificate

**Audit Summary Report**  
A Company  
Collection: 926  
Donation Reference: 19-0011

**Donated Device**  
Our team collected these premises on Thursday 31st May 2018. A total of 739 devices were transported to our Kent warehouse. All devices have been banded and are now in the Digital Pipeline, and are now being functionally tested to audit.

**DATA SECURITY**  
Our engineers removed all removable components that can potentially contain data from their original device. They are then transferred directly to our data wiping area to be securely data wiped.

A total of 760 hard disks have been securely data-wiped or destroyed. A data wipe report detailing all hard drive ID numbers with corresponding data wipe dates and times and a certificate confirming the successful data wipe or destruction of each drive is included.

**Donation History**

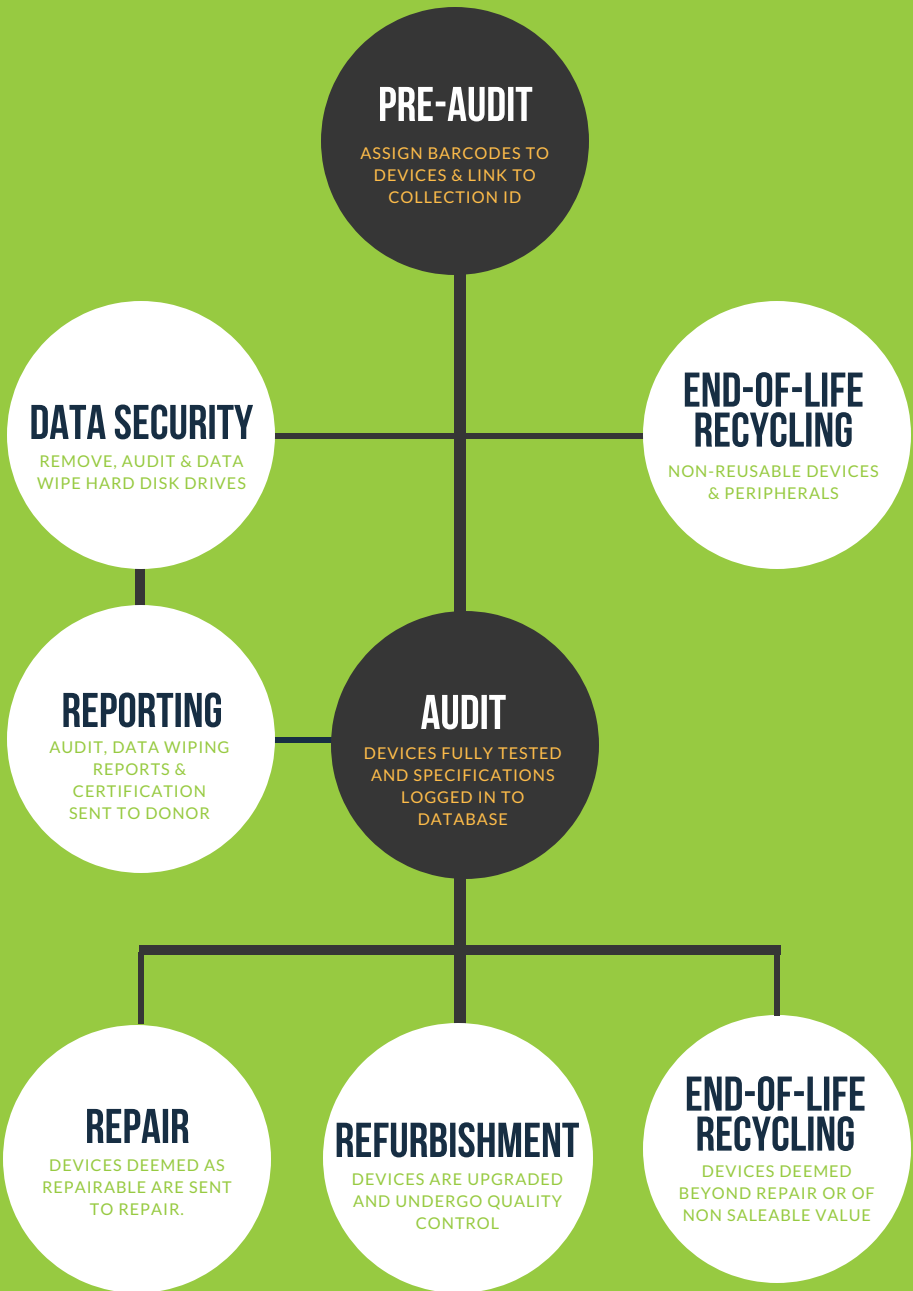
9 Months	7	1240
Since you joined the Digital Pipeline network	Donations received since you joined	Total devices donated since you joined

**Data Wipe Log 926**  
A Company  
22 Jun 2018 11:46

Serial Number	Stock ID	Capacity	Brand	Model	Wipe Method	Wipe Date	Wipe Time	Wipe Status
HT10000	HT1000	1TB	Hitachi	HT1000	DATA WIPED	22 Jun 2018	11:46	SUCCESS
HT10001	HT1001	1TB	Hitachi	HT1001	DATA WIPED	22 Jun 2018	11:46	SUCCESS
HT10002	HT1002	1TB	Hitachi	HT1002	DATA WIPED	22 Jun 2018	11:46	SUCCESS

**Certificate of Data Destruction**  
A Company  
Collection ID: 926 Collection Date: 08 December 2017  
22 May 2018

This is to certify that all items containing data have been securely data wiped or destroyed.



# GOODS OUT

## REPAIR

ALL REPAIRABLE DEVICES ARE REPAIRED AND SENT FOR REFURBISHMENT

## REFURBISHMENT

DEVICES ARE UPGRADED AND UNDERGO QUALITY CONTROL

## END-OF-LIFE RECYCLING

DEVICES DEEMED BEYOND REPAIR OR OF NON SALEABLE VALUE

### QUALITY CONTROL

#### Install

Devices are installed and activated with the latest Microsoft Windows operating system and other relevant software through our Microsoft Refurbishers agreement.

#### Electrical Safety

All devices including cables are PAT tested for electrical safety before redistribution.

#### Clean

The devices are thoroughly cleaned internally and externally to the highest possible standard to give maximum life extension.

#### Package

Once the devices have been installed, activated and cleaned, they are then packaged, barcoded and ready for redistribution.

#### Manual Disassembly

All components are removed and separated into different stillages to be recycled or reused to upgrade other devices. Device cases such as metals and plastics are also separated and stored in the relevant stillages or containers.

### REDISTRIBUTION

#### DIGITAL DIVIDE PROJECTS

Developing Countries

#### DIGITAL DIVIDE PROJECTS

United Kingdom

#### GENERAL SALES

Raise funds to support projects

#### SPECIALISED COMPONENT REFINERS

0% Landfill Policy

# Redistribution

---

Once the process is complete we redistribute the refurbished equipment to help bridge the Digital Divide in developing nations and in the UK.



Africa - Helping to improve educational achievements through access to technology.



UK - Using technology to help reduce negative health impacts resulting from loneliness and isolation among the elderly and disabled in disadvantaged communities.



**For further information contact us at:**

[www.repcltd.co.uk](http://www.repcltd.co.uk)

[info@repcltd.co.uk](mailto:info@repcltd.co.uk)

0121 557 6439